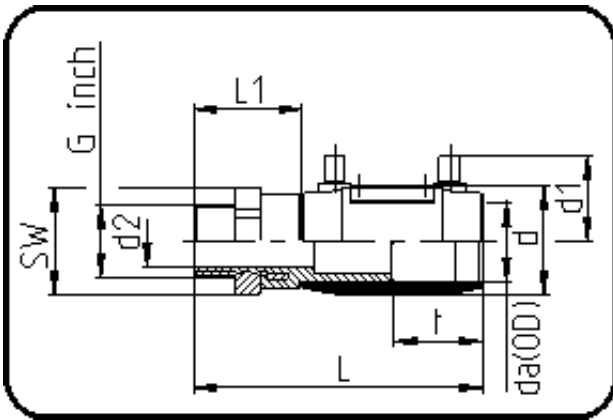


E-Schweisbare Fittings



Code: 185

- E-Übergangsmuffe
- mit Messing-Aussengewinde
- W/P-TW
- formgespritzt
- Heizwendel-Schweissung
- PE 100-RC schwarz

Dimension	Code	Detail	Gewicht
50 X 2	70.185.6350.11	50X2" SDR 17-11 PN16	0.83

	Einheit	Nominale	Tol+	Tol-
da(OD)	mm	50	0.00	0.00
L	mm	168	3.00	3.00
L1	mm	57	2.00	2.00
SW	mm	65	0.00	0.00
G	inch	2	0.00	0.00
d	mm	67	1.00	1.00
d1	mm	53	1.50	1.50
t	mm	55	1.50	1.50
E	mm	59,61	0.00	0.00
d2	mm	34	2.00	2.00
K	mm	56,66	0.00	0.00