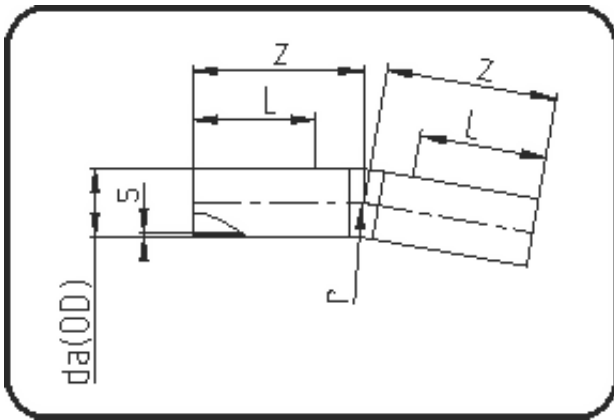


Rohrbögen



Code: 394

- Rohrbogen 11°
- Radius 1,5 x da
- aus Rohr geformt
- **Stumpf + E-Muffenschweissung**
- **PE 100-RC schwarz**

Dimension	Code	Detail	Gewicht
400	70.394.0400.11	400 SDR11 ISO S-5 16 bar	70.90

	Einheit	Nominale	Tol+	Tol-
da(OD)	mm	400	0.00	0.00
L	mm	550	0.00	0.00
r	mm	600	0.00	0.00
s	mm	36,3	0.00	0.00
z	mm	850	75.00	75.00