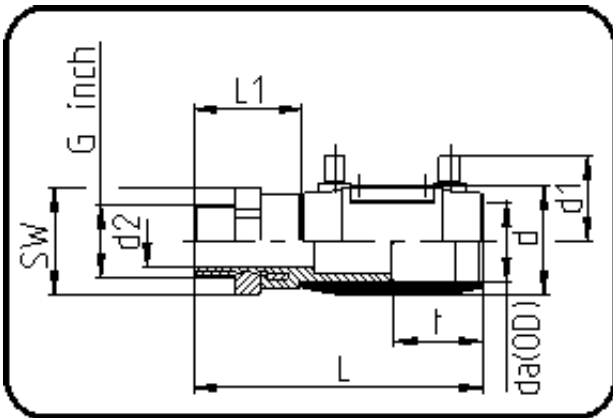


## E-Schweissbare Fittings



Code: 185

- E-Übergangsmuffe
- mit Messing-Aussengewinde
- W/P-TW
- formgespritzt
- Heizwendel-Schweissung
- PE 100-RC schwarz

Dimension	Code	Detail	Gewicht
63 X 1 1/2	70.185.5063.11	63X1 1/2" SDR 17-11 PN16	0.83

	Einheit	Nominale	Tol+	Tol-
da(OD)	mm	63	0.00	0.00
L	mm	183	3.00	3.00
L1	mm	56	2.00	2.00
SW	mm	70	0.00	0.00
G	inch	1,5	0.00	0.00
d	mm	83	1.00	1.00
d1	mm	60	1.50	1.50
t	mm	63	1.50	1.50
E	mm	47,8	0.00	0.00
d2	mm	34	2.00	2.00
K	mm	44,85	0.00	0.00