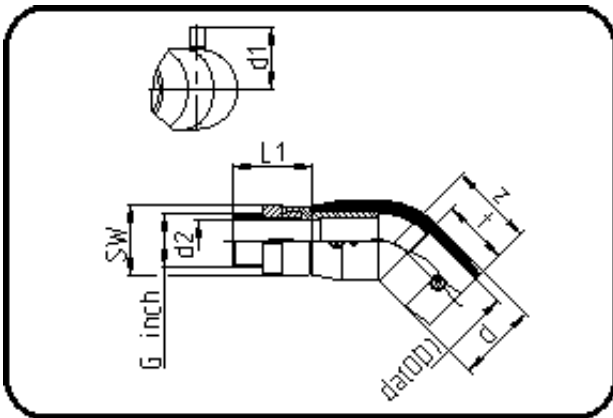


E-Schweissbare Fittings



Code: 188

- E-Übergangswinkel 45°
- mit Messing-Aussengewinde
- W/P-TW
- formgespritzt
- Heizwendel-Schweissung
- PE 100-RC schwarz

Dimension	Code	Detail	Gewicht
20 X 1/2	70.188.2020.11	20X1/2" SDR 11 PN16	0.15

	Einheit	Nominale	Tol+	Tol-
da(OD)	mm	20	0.00	0.00
L1	mm	45	1.50	1.50
SW	mm	32	0.00	0.00
G	inch	0,5	0.00	0.00
d	mm	30	0.75	0.75
d1	mm	34	1.50	1.50
t	mm	37	0.00	0.90
E	mm	20,96	0.00	0.00
d2	mm	12	0.00	0.00
K	mm	18,63	0.00	0.00
z	mm	52	2.25	2.25