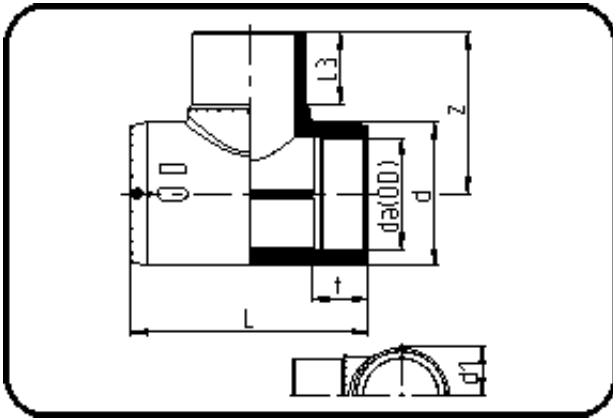


E-Schweissbare Fittings



Code: 176

- E-T-Stück
- MOP Wasser 16bar / Gas 10bar
- W/P-TW
- formgespritzt
- **Heizwendel-Schweissung**
- PE 100-RC schwarz

Dimension	Code	Detail	Gewicht
225	70.176.0225.11	225 SDR 17-11	13.00

	Einheit	Nominale	Tol+	Tol-
da(OD)	mm	225	1.40	0.00
L	mm	478	7.50	0.00
L3	mm	147	2.25	2.25
d	mm	286	1.50	1.50
d1	mm	150	1.50	1.50
t	mm	110	3.00	3.00
z	mm	323	3.00	3.00