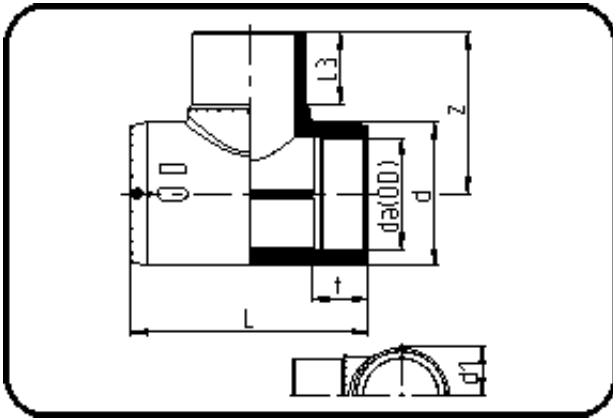


E-Schweissbare Fittings



Code: 176

- E-T-Stück
- MOP Wasser 16bar / Gas 10bar
- W/P-TW
- formgespritzt
- Heizwendel-Schweissung
- PE 100-RC schwarz

Dimension	Code	Detail	Gewicht
125	70.176.0125.11	125 SDR 17-11	3.77

	Einheit	Nominale	Tol+	Tol-
da(OD)	mm	125	0.00	0.00
L	mm	347,5	6.00	0.00
L3	mm	111	2.25	2.25
d	mm	170	1.50	1.50
d1	mm	93,1	1.50	1.50
t	mm	86	1.50	1.50
z	mm	211	2.25	2.25