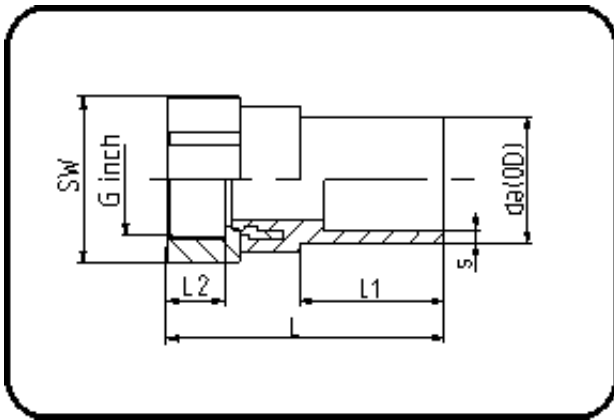


E-Schweissbare Fittings



Code: 180.1

- Stahl-R-Innengewinde
- für E-Übergang
- W/P-TW
- formgespritzt
- **Heizwendel-Schweissung**
- **PE 100-RC schwarz**

Auslaufprodukte.

Dimension	Code	Detail	Gewicht
20 X 1/2	70.180.1020.11	20X1/2" SDR 11 PN16	0.12

	Einheit	Nominale	Tol+	Tol-
da(OD)	mm	20	0.30	0.00
L	mm	76	1.50	1.50
L1	mm	40	1.50	1.50
SW	mm	32	0.00	0.00
G	inch	0,5	0.00	0.00
L2	mm	15	0.75	0.00
s	mm	3	0.40	0.00
E	mm	20,96	0.00	0.00
K	mm	18,63	0.00	0.00