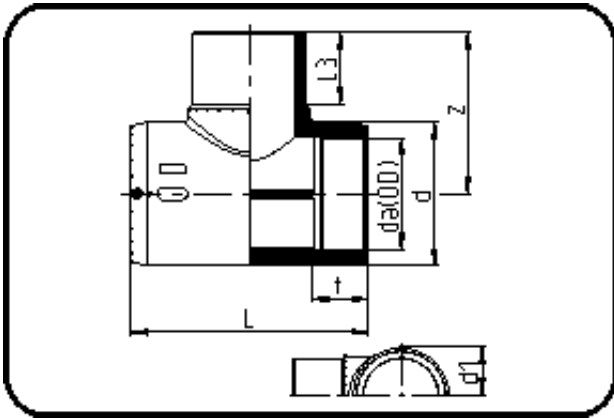


E-Schweissbare Fittings



Code: 176

- E-T-Stück
- MOP Wasser 16bar / Gas 10bar
- W/P-TW
- formgespritzt
- **Heizwendel-Schweissung**
- PE 100-RC schwarz

Dimension	Code	Detail	Gewicht
75	70.176.0075.11	75 SDR 17-11	0.65

	Einheit	Nominale	Tol+	Tol-
da(OD)	mm	75	0.00	0.00
L	mm	209	4.50	0.00
L3	mm	71,5	2.25	2.25
d	mm	96,5	0.75	0.75
d1	mm	64	1.50	1.50
t	mm	69	1.50	1.50
z	mm	132	2.25	2.25