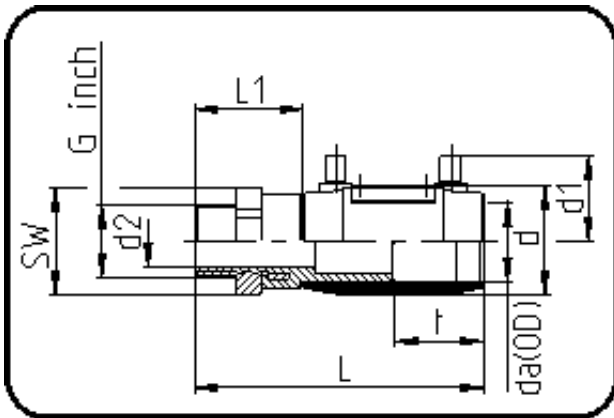


E-Schweisbare Fittings



Code: 185

- E-Übergangsmuffe
- mit Messing-Aussengewinde
- W/P-TW
- formgespritzt
- Heizwendel-Schweissung
- PE 100-RC schwarz

Dimension	Code	Detail	Gewicht
63 X 2	70.185.6363.11	63X2" SDR 17-11 PN16	0.83

	Einheit	Nominale	Tol+	Tol-
da(OD)	mm	63	0.00	0.00
L	mm	189	3.75	3.75
L1	mm	62	1.50	1.50
SW	mm	70	0.00	0.00
G	inch	2	0.00	0.00
d	mm	83	0.75	0.75
d1	mm	56	1.50	1.50
t	mm	63	0.00	0.90
E	mm	59,61	0.00	0.00
d2	mm	42	0.00	0.00
K	mm	56,66	0.00	0.00