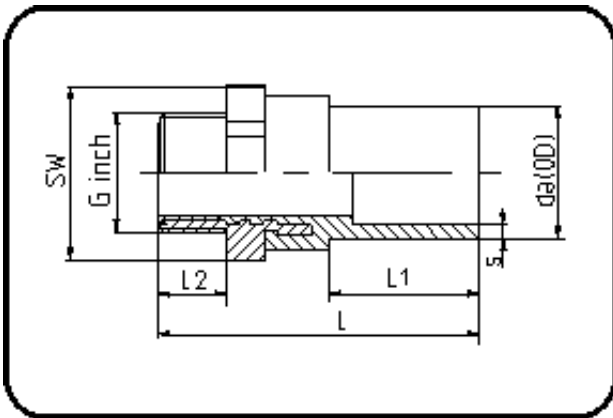


E-Schweissbare Fittings



Code: 181

- Messing-R-Aussengewinde
- für E-Übergang
- W/P-TW
- formgespritzt
- Heizwendel-Schweissung
- PE 100-RC schwarz

Dimension	Code	Detail	Gewicht
40 X 1 1/2	70.181.5040.11	40X1 1/2" SDR 17-11 PN16	0.40

	Einheit	Nominale	Tol+	Tol-
da(OD)	mm	40	0.40	0.00
L	mm	103	1.50	1.50
L1	mm	51	1.50	1.50
SW	mm	50	0.00	0.00
G	inch	1,5	0.00	0.00
L2	mm	25	0.75	0.00
s	mm	3,7	0.50	0.00
E	mm	47,8	0.00	0.00
K	mm	44,85	0.00	0.00