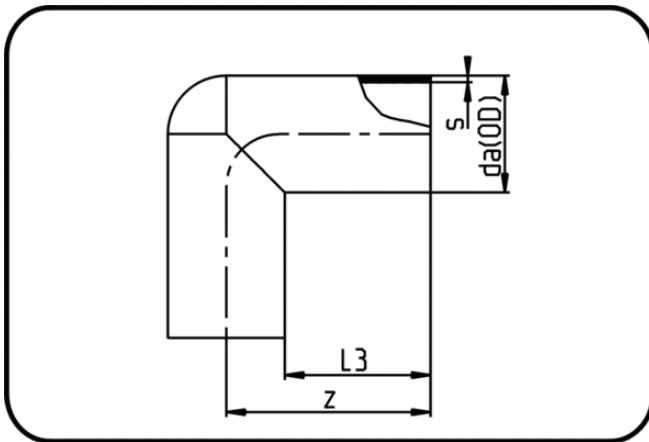


Verlängerte Fittings



Code: 061

- Winkel 90°
- lange Schenkel
- W/P-TW
- formgespritzt
- **Stumpf + E-Muffenschweissung**
- **PE 100-RC schwarz**

Dimension	Code	Detail	da(OD) mm	s mm	z mm	L3 mm	Gewicht
250	70.061.0250.11	250X22,7 SDR11 PN16	250	22,7	304	175	9.44
280	70.061.0280.11	280X25,4 SDR11 PN16	280	25,4	340	197	12.86
315	70.061.0315.11	315X28,6 SDR11 PN16	315	28,6	370	205	18.10