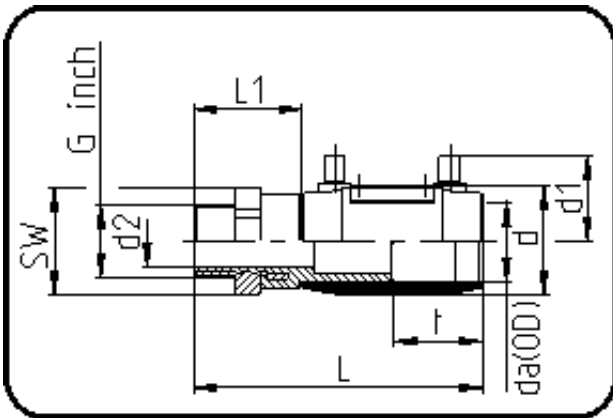


## E-Schweissbare Fittings



Code: 185

- E-Übergangsmuffe
- mit Messing-Aussengewinde
- W/P-TW
- formgespritzt
- Heizwendel-Schweissung
- PE 100-RC schwarz

Dimension	Code	Detail	Gewicht
40 X 2	70.185.6340.11	40X2" SDR 17-11 PN16	0.85

	Einheit	Nominale	Tol+	Tol-
da(OD)	mm	40	0.00	0.00
L	mm	155	3.00	3.00
L1	mm	56	2.00	2.00
SW	mm	65	0.00	0.00
G	inch	2	0.00	0.00
d	mm	53	1.00	1.00
d1	mm	47	1.50	1.50
t	mm	49	1.50	1.50
E	mm	59,61	0.00	0.00
d2	mm	28	2.00	2.00
K	mm	56,66	0.00	0.00