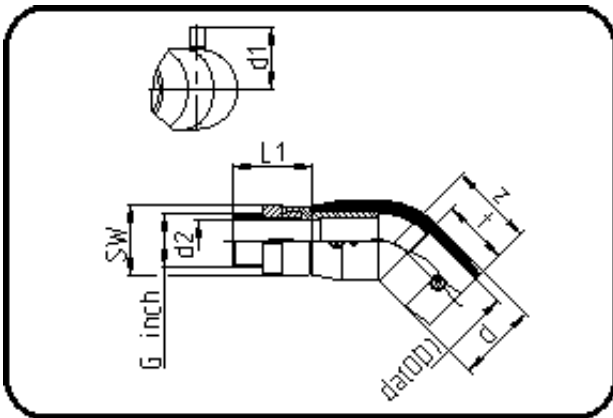


## E-Schweissbare Fittings



Code: 188

- E-Übergangswinkel 45°
- mit Messing-Aussengewinde
- W/P-TW
- formgespritzt
- Heizwendel-Schweissung
- PE 100-RC schwarz

Dimension	Code	Detail	Gewicht
25 X 3/4	70.188.2525.11	25X3/4" SDR 11 PN16	0.18

	Einheit	Nominale	Tol+	Tol-
da(OD)	mm	25	0.00	0.00
L1	mm	46	1.50	1.50
SW	mm	36	0.00	0.00
G	inch	0,75	0.00	0.00
d	mm	35	0.75	0.75
d1	mm	37	1.50	1.50
t	mm	40	0.00	0.90
E	mm	26,44	0.00	0.00
d2	mm	16	0.00	0.00
K	mm	24,12	0.00	0.00
z	mm	52	2.25	2.25