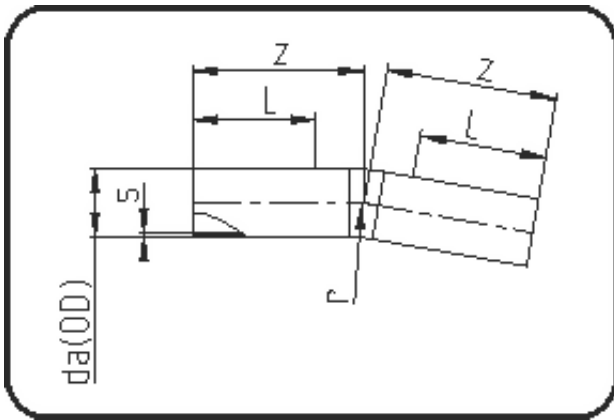


## Rohrbögen



Code: 394

- Rohrbogen 11°
- Radius 1,5 x da
- aus Rohr geformt
- **Stumpf + E-Muffenschweissung**
- **PE 100-RC schwarz**

Dimension	Code	Detail	Gewicht
560	70.394.0560.11	560 SDR11 ISO S-5 16 bar	172.00

	Einheit	Nominale	Tol+	Tol-
da(OD)	mm	560	0.00	0.00
L	mm	650	0.00	0.00
r	mm	840	0.00	0.00
s	mm	50,8	0.00	0.00
z	mm	1.050	75.00	75.00