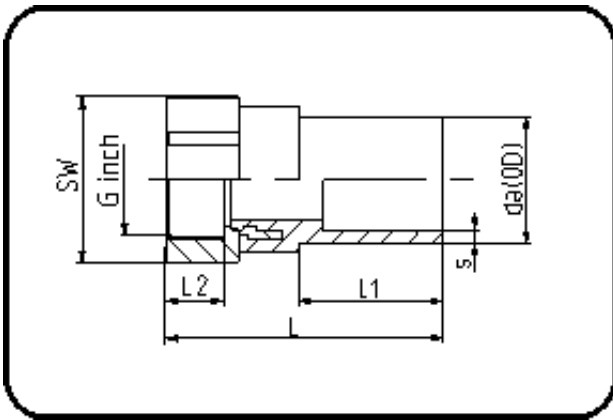


E-Schweissbare Fittings



Code: 180

- Messing-R-Innengewinde
- für E-Übergang
- W/P-TW
- formgespritzt
- Heizwendel-Schweissung
- PE 100-RC schwarz

Dimension	Code	Detail	Gewicht
40 X 1 1/4	70.180.0040.11	40X1 1/4" SDR 17-11 PN16	0.30

	Einheit	Nominale	Tol+	Tol-
da(OD)	mm	40	0.40	0.00
L	mm	98	1.50	1.50
L1	mm	51	1.50	1.50
SW	mm	50	0.00	0.00
G	inch	1,25	0.00	0.00
L2	mm	21	0.75	0.00
s	mm	3,7	0.50	0.00
E	mm	41,91	0.00	0.00
K	mm	38,95	0.00	0.00