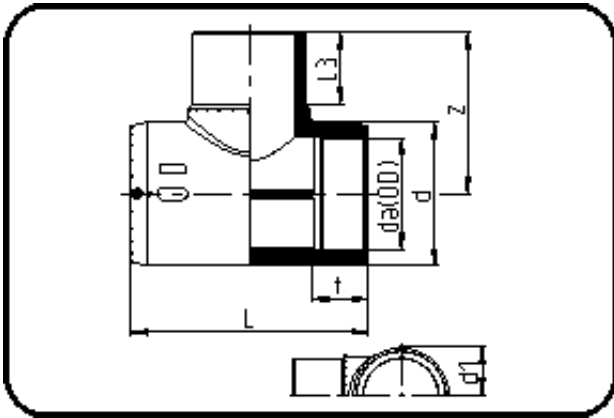


E-Schweissbare Fittings



Code: 176

- E-T-Stück
- MOP Wasser 16bar / Gas 10bar
- W/P-TW
- formgespritzt
- **Heizwendel-Schweissung**
- PE 100-RC schwarz

Dimension	Code	Detail	Gewicht
140	70.176.0140.11	140 SDR 17-11	4.60

	Einheit	Nominale	Tol+	Tol-
da(OD)	mm	140	0.90	0.00
L	mm	349	6.00	0.00
L3	mm	111	2.25	2.25
d	mm	189	1.50	1.50
d1	mm	98	1.50	1.50
t	mm	88,5	3.00	3.00
z	mm	226,5	2.25	2.25