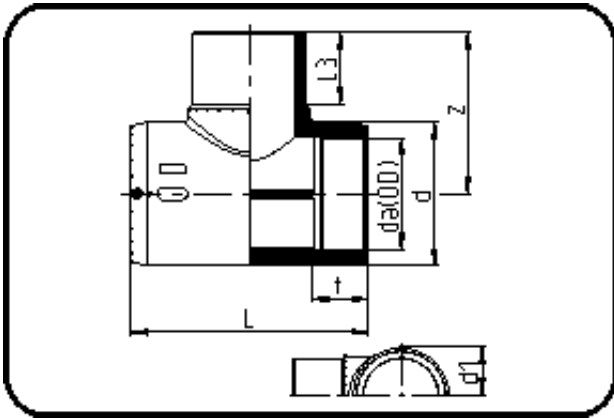


E-Schweissbare Fittings



Code: 176

- E-T-Stück
- MOP Wasser 16bar / Gas 10bar
- W/P-TW
- formgespritzt
- **Heizwendel-Schweissung**
- PE 100-RC schwarz

Dimension	Code	Detail	Gewicht
50	70.176.0050.11	50 SDR 11	0.30

	Einheit	Nominale	Tol+	Tol-
da(OD)	mm	50	0.00	0.00
L	mm	160	4.50	0.00
L3	mm	58	2.25	2.25
d	mm	69	0.75	0.75
d1	mm	52,5	1.50	1.50
t	mm	54	1.50	1.50
z	mm	100	1.50	1.50