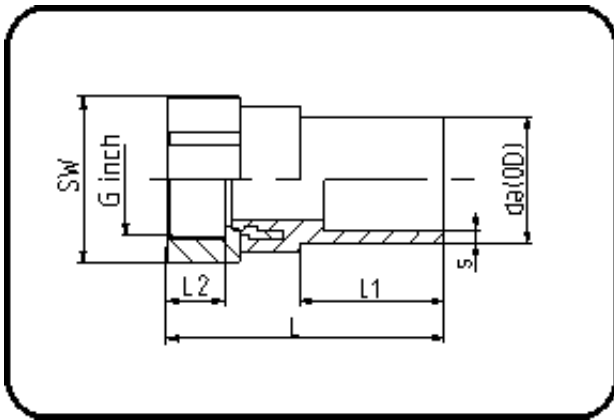


E-Schweissbare Fittings



Code: 180.1

- Stahl-R-Innengewinde
- für E-Übergang
- W/P-TW
- formgespritzt
- **Heizwendel-Schweissung**
- **PE 100-RC schwarz**

Auslaufprodukte.

Dimension	Code	Detail	Gewicht
25 X 3/4	70.180.1025.11	25X3/4" SDR 11 PN16	0.15

	Einheit	Nominale	Tol+	Tol-
da(OD)	mm	25	0.30	0.00
L	mm	80	1.50	1.50
L1	mm	43	1.50	1.50
SW	mm	36	0.00	0.00
G	inch	0,75	0.00	0.00
L2	mm	16	0.75	0.00
s	mm	3	0.40	0.00
E	mm	26,44	0.00	0.00
K	mm	24,12	0.00	0.00