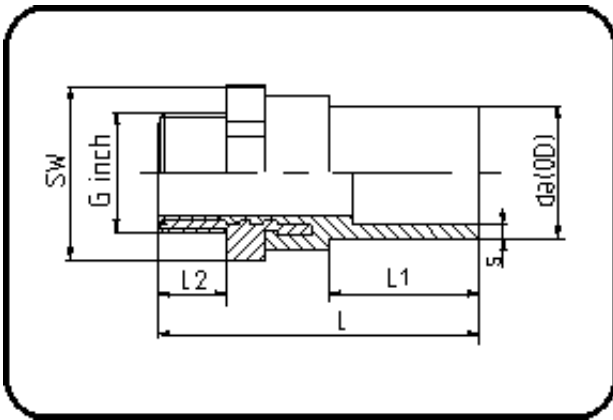


E-Schweissbare Fittings



Code: 181

- Messing-R-Aussengewinde
- für E-Übergang
- W/P-TW
- formgespritzt
- Heizwendel-Schweissung
- PE 100-RC schwarz

Dimension	Code	Detail	Gewicht
32 X 3/4	70.181.2532.11	32X3/4" SDR 11 PN16	0.19

	Einheit	Nominale	Tol+	Tol-
da(OD)	mm	32	0.30	0.00
L	mm	90	1.50	1.50
L1	mm	46	1.50	1.50
SW	mm	41	0.00	0.00
G	inch	0,75	0.00	0.00
L2	mm	18	0.75	0.00
s	mm	3	0.40	0.00
E	mm	26,44	0.00	0.00
K	mm	24,12	0.00	0.00