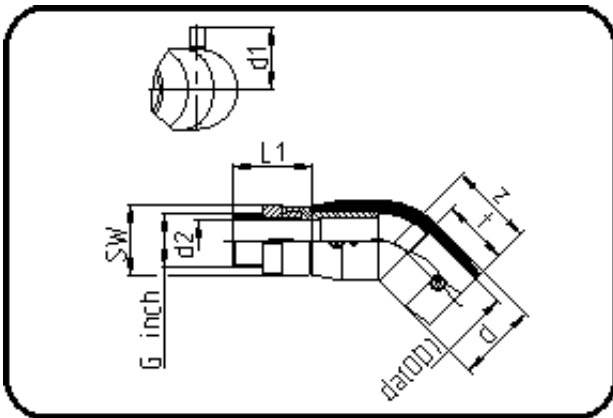


## E-Schweisbare Fittings



Code: 188

- E-Übergangswinkel 45°
- mit Messing-Aussengewinde
- W/P-TW
- formgespritzt
- Heizwendel-Schweissung
- PE 100-RC schwarz

Dimension	Code	Detail	Gewicht
32 X 1	70.188.3232.11	32X1" SDR 11 PN16	0.26

	Einheit	Nominale	Tol+	Tol-
da(OD)	mm	32	0.00	0.00
L1	mm	49	1.50	1.50
SW	mm	41	0.00	0.00
G	inch	1	0.00	0.00
d	mm	42	0.75	0.75
d1	mm	40	1.50	1.50
t	mm	44	0.00	0.90
E	mm	33,25	0.00	0.00
d2	mm	21	0.00	0.00
K	mm	30,29	0.00	0.00
z	mm	56	2.25	2.25