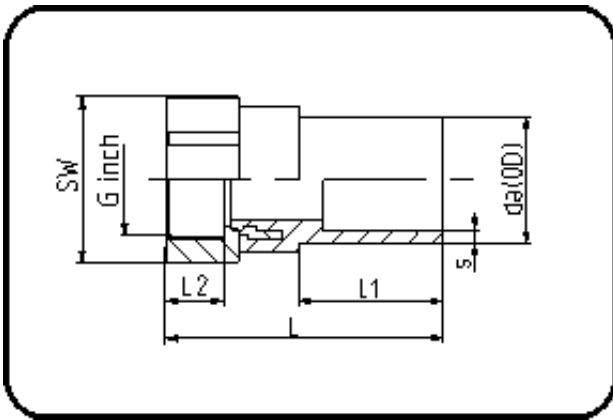


## E-Schweissbare Fittings



Code: 180.1

- Stahl-R-Innengewinde
- für E-Übergang
- W/P-TW
- formgespritzt
- **Heizwendel-Schweissung**
- **PE 100-RC schwarz**

Auslaufprodukte.

| Dimension | Code           | Detail               | Gewicht |
|-----------|----------------|----------------------|---------|
| 63 X 2    | 70.180.1063.11 | 63X2" SDR 17-11 PN16 | 0.72    |

|        | Einheit | Nominale | Tol+ | Tol- |
|--------|---------|----------|------|------|
| da(OD) | mm      | 63       | 0.40 | 0.00 |
| L      | mm      | 129      | 1.50 | 1.50 |
| L1     | mm      | 65       | 1.50 | 1.50 |
| SW     | mm      | 70       | 0.00 | 0.00 |
| G      | inch    | 2        | 0.00 | 0.00 |
| L2     | mm      | 27       | 0.75 | 0.00 |
| s      | mm      | 5,8      | 0.70 | 0.00 |
| E      | mm      | 59,61    | 0.00 | 0.00 |
| K      | mm      | 56,66    | 0.00 | 0.00 |