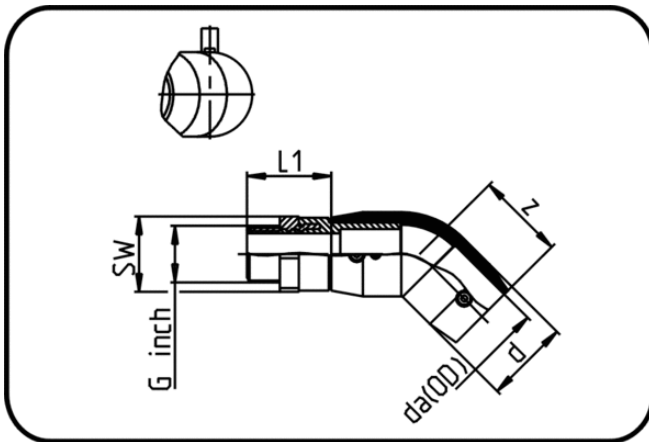


E-Schweissbare Fittings



Code: 188

- E-Übergangswinkel 45°
- mit Messing-Aussengewinde
- W/P-TW
- formgespritzt
- Heizwendel-Schweissung
- PE 100-RC schwarz

Dimension	Code	Detail	da(OD) mm	z mm	L1 mm	d mm	SW mm	G inch	Gewicht
20 X 1/2	70.188.2020.11	20X1/2" SDR 11 PN16	20	52	45	30	32	0,5	0.15
25 X 3/4	70.188.2525.11	25X3/4" SDR 11 PN16	25	52	46	35	36	0,75	0.18
32 X 1	70.188.3232.11	32X1" SDR 11 PN16	32	56	49	42	41	1	0.26
40 X 1 1/4	70.188.4040.11	40X1 1/4" SDR 17-11 PN16	40	63	52	53	50	1,25	0.40
50 X 1 1/2	70.188.5050.11	50X1 1/2" SDR 17-11 PN16	50	70	55	67	60	1,5	0.57
63 X 2	70.188.6363.11	63X2" SDR 17-11 PN16	63	82	62	83	70	2	0.90