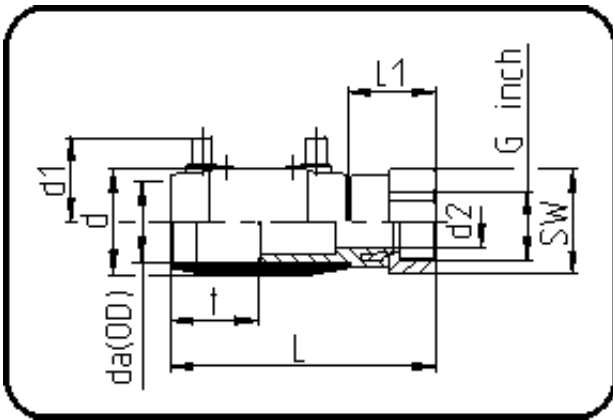


## E-Schweissbare Fittings



Code: 184

- E-Übergangsmuffe
- mit Messing-Innengewinde
- W/P-TW
- formgespritzt
- Heizwendel-Schweissung
- PE 100-RC schwarz

| Dimension | Code           | Detail              | Gewicht |
|-----------|----------------|---------------------|---------|
| 25 X 3/4  | 70.184.2525.11 | 25X3/4" SDR 11 PN16 | 0.19    |

|        | Einheit | Nominale | Tol+ | Tol- |
|--------|---------|----------|------|------|
| da(OD) | mm      | 25       | 0.00 | 0.00 |
| L      | mm      | 121      | 3.75 | 3.75 |
| L1     | mm      | 40       | 1.50 | 1.50 |
| SW     | mm      | 36       | 0.00 | 0.00 |
| G      | inch    | 0,75     | 0.00 | 0.00 |
| d      | mm      | 35       | 0.75 | 0.75 |
| d1     | mm      | 37       | 1.50 | 1.50 |
| t      | mm      | 40       | 0.00 | 0.90 |
| E      | mm      | 26,44    | 0.00 | 0.00 |
| d2     | mm      | 16       | 0.00 | 0.00 |
| K      | mm      | 24,12    | 0.00 | 0.00 |