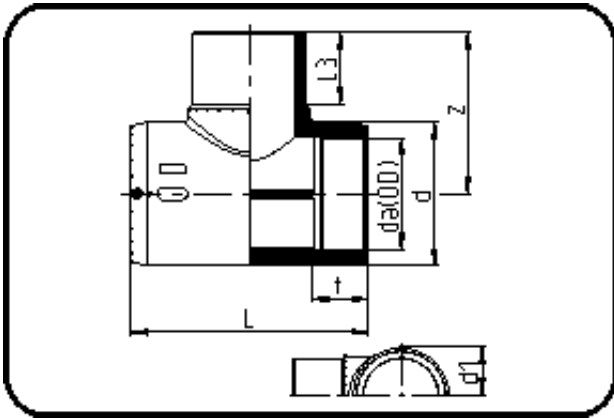


E-Schweissbare Fittings



Code: 176

- E-T-Stück
- MOP Wasser 16bar / Gas 10bar
- W/P-TW
- formgespritzt
- Heizwendel-Schweissung
- PE 100-RC schwarz

Dimension	Code	Detail	Gewicht
90	70.176.0090.11	90 SDR 17-11	1.72

	Einheit	Nominale	Tol+	Tol-
da(OD)	mm	90	0.00	0.00
L	mm	291,5	4.50	0.00
L3	mm	91	2.25	2.25
d	mm	124	1.50	1.50
d1	mm	72,5	1.50	1.50
t	mm	76	1.50	1.50
z	mm	168,5	2.25	2.25