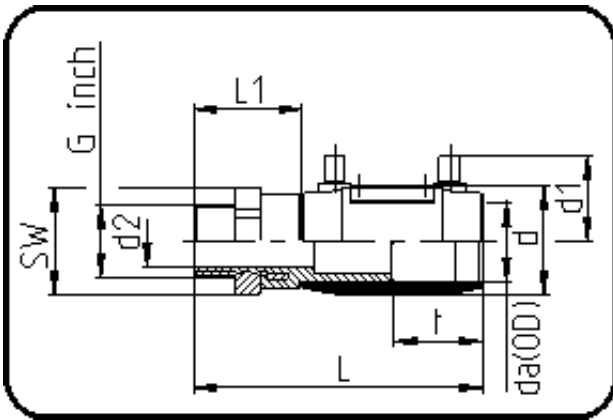


E-Schweissbare Fittings



Code: 185

- E-Übergangsmuffe
- mit Messing-Aussengewinde
- W/P-TW
- formgespritzt
- Heizwendel-Schweissung
- PE 100-RC schwarz

Dimension	Code	Detail	Gewicht
32 X 3/4	70.185.2532.11	32X3/4" SDR 11 PN16	0.24

	Einheit	Nominale	Tol+	Tol-
da(OD)	mm	32	0.00	0.00
L	mm	133	3.00	3.00
L1	mm	44	2.00	2.00
SW	mm	41	0.00	0.00
G	inch	0,75	0.00	0.00
d	mm	42	1.00	1.00
d1	mm	43	1.50	1.50
t	mm	44	1.50	1.50
E	mm	26,44	0.00	0.00
d2	mm	16	2.00	2.00
K	mm	24,12	0.00	0.00