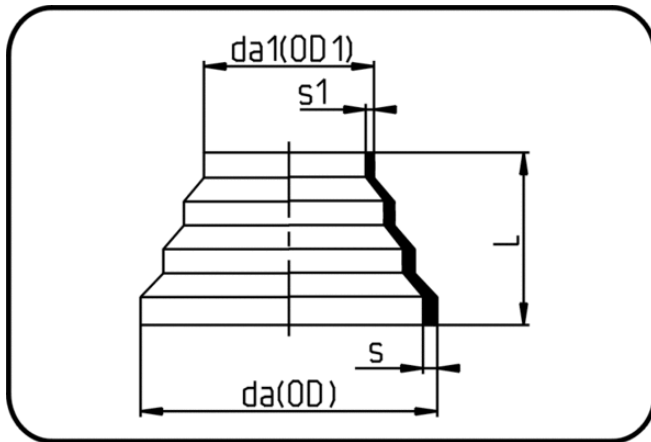


## Kurzschenkelige Fittings



Code: 007

- Reduktion konzentrisch
- kurze Schenkel
- formgespritzt
- Stumpfschweissung
- PE 100-RC schwarz

Dimension	Code	Detail	da(OD) mm	da(OD1) mm	s mm	L mm	s1 mm	Gewicht
110/63	70.007.1163.33	110/63 SDR33 ISO S-16	110	63	3,4	62	2	0.05
125/75	70.007.1275.33	125/75 SDR33 ISO S-16	125	75	3,9	72	2,3	0.10
160/110	70.007.1611.33	160/110 SDR33 ISO S-16	160	110	4,9	83	3,4	0.17
225/160	70.007.2216.33	225/160 SDR33 ISO S-16	225	160	6,9	90	4,9	0.40
315/225	70.007.3122.33	315/225 SDR33 ISO S-16	315	225	9,7	130	6,9	1.16
450/315	70.007.4531.33	450/315 SDR33 ISO S-16	450	315	13,8	170	9,7	3.28
630/450	70.007.6345.33	630/450 SDR33 ISO S-16	630	450	19,3	188	13,8	9.60
75/32	70.007.7532.17	75/32 SDR17 ISO S-8	75	32	4,5	71	2	0.04
110/63	70.007.1163.17	110/63 SDR17 ISO S-8	110	63	6,6	62	3,8	0.10
125/75	70.007.1275.17	125/75 SDR17 ISO S-8	125	75	7,4	72	4,5	0.16
160/110	70.007.1611.17	160/110 SDR17 ISO S-8	160	110	9,5	83	6,6	0.29
225/160	70.007.2216.17	225/160 SDR17 ISO S-8	225	160	13,4	90	9,5	0.68
315/225	70.007.3122.17	315/225 SDR17 ISO S-8	315	225	18,7	130	13,4	1.95
450/315	70.007.4531.17	450/315 SDR17 ISO S-8	450	315	26,7	167	18,7	5.14
630/450	70.007.6345.17	630/450 SDR17 ISO S-8	630	450	37,4	188	26,7	11.60
63/16	70.007.6316.11	63/16 SDR11 ISO S-5	63	16	5,8	97	1,8	0.04
75/32	70.007.7532.11	75/32 SDR11 ISO S-5	75	32	6,8	71	3	0.06
110/63	70.007.1163.11	110/63 SDR11 ISO S-5	110	63	10	62	5,8	0.14
125/75	70.007.1275.11	125/75 SDR11 ISO S-5	125	75	11,4	72	6,8	0.23
160/110	70.007.1611.11	160/110 SDR11 ISO S-5	160	110	14,6	83	10	0.43
225/160	70.007.2216.11	225/160 SDR11 ISO S-5	225	160	20,5	90	14,6	1.02
315/225	70.007.3122.11	315/225 SDR11 ISO S-5	315	225	28,6	130	20,5	2.68
450/315	70.007.4531.11	450/315 SDR11 ISO S-5	450	315	40,9	181	28,6	7.82