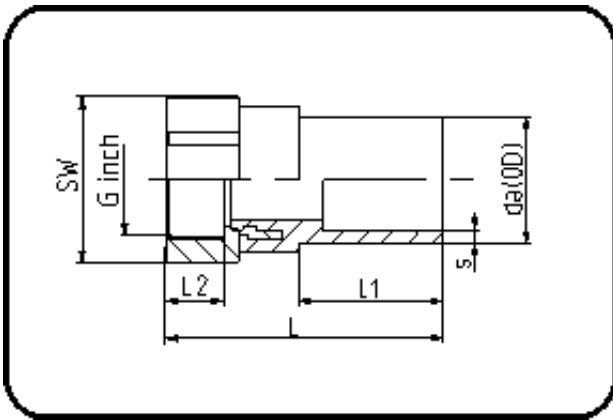


E-Schweissbare Fittings



Code: 180.1

- Stahl-R-Innengewinde
- für E-Übergang
- W/P-TW
- formgespritzt
- **Heizwendel-Schweissung**
- **PE 100-RC schwarz**

Auslaufprodukte.

Dimension	Code	Detail	Gewicht
32 X 1	70.180.1032.11	32X1" SDR 11 PN16	0.18

	Einheit	Nominale	Tol+	Tol-
da(OD)	mm	32	0.30	0.00
L	mm	88	1.50	1.50
L1	mm	46	1.50	1.50
SW	mm	41	0.00	0.00
G	inch	1	0.00	0.00
L2	mm	19	0.75	0.00
s	mm	3	0.40	0.00
E	mm	33,25	0.00	0.00
K	mm	30,29	0.00	0.00