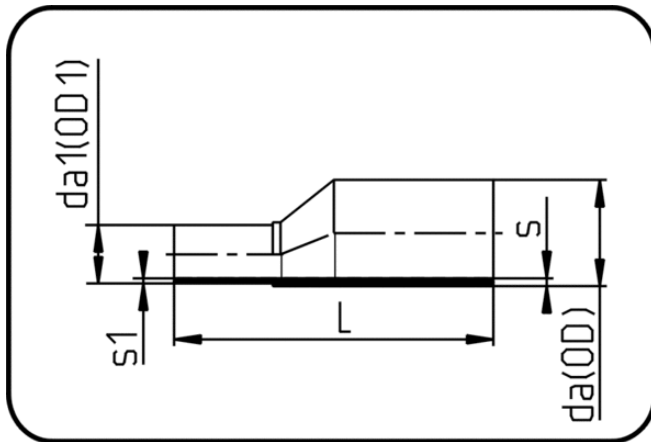


Verlängerte Fittings



Code: 069

- Reduktion exzentrisch
- lange Schenkel
- formgespritzt
- **Stumpf + E-Muffenschweissung**
- PPR grau

Dimension	Code	Detail	da(OD) mm	da(OD1) mm	s mm	L mm	s1 mm	Gewicht
25/20	11.069.2520.11	25/20 SDR11 ISO S-5	25	20	2,3	103	1,9	0.02
32/25	11.069.3225.11	32/25 SDR11 ISO S-5	32	25	2,9	114	2,3	0.02
40/25	11.069.4025.11	40/25 SDR11 ISO S-5	40	25	3,7	126	2,3	0.05
40/32	11.069.4032.11	40/32 SDR11 ISO S-5	40	32	3,7	125	2,9	0.05
50/32	11.069.5032.11	50/32 SDR11 ISO S-5	50	32	4,6	156	2,9	0.08
50/40	11.069.5040.11	50/40 SDR11 ISO S-5	50	40	4,6	157	3,7	0.09
63/32	11.069.6332.11	63/32 SDR11 ISO S-5	63	32	5,8	177	2,9	0.13
63/40	11.069.6340.11	63/40 SDR11 ISO S-5	63	40	5,8	177	3,7	0.13
63/50	11.069.6350.11	63/50 SDR11 ISO S-5	63	50	5,8	177	4,6	0.15
75/50	11.069.7550.11	75/50 SDR11 ISO S-5	75	50	6,8	197	4,6	0.22
75/63	11.069.7563.11	75/63 SDR11 ISO S-5	75	63	6,8	197	5,8	0.24
90/63	11.069.9063.11	90/63 SDR11 ISO S-5	90	63	8,2	220	5,8	0.35
90/75	11.069.9075.11	90/75 SDR11 ISO S-5	90	75	8,2	223	6,8	0.39
110/63	11.069.1163.11	110/63 SDR11 ISO S-5	110	63	10	247	5,8	0.55
110/90	11.069.1190.11	110/90 SDR11 ISO S-5	110	90	10	244	8,2	0.63
125/63	11.069.1263.11	125/63 SDR11 ISO S-5	125	63	11,4	268	5,8	0.79
125/90	11.069.1290.11	125/90 SDR11 ISO S-5	125	90	11,4	265	8,2	0.86
125/110	11.069.1211.11	125/110 SDR11 ISO S-5	125	110	11,4	265	10	0.93
140/125	11.069.1412.11	140/125 SDR11 ISO S-5	140	125	12,7	287	11,4	1.27
160/90	11.069.1690.11	160/90 SDR11 ISO S-5	160	90	14,6	309	8,2	1.47
160/110	11.069.1611.11	160/110 SDR11 ISO S-5	160	110	14,6	309	10	1.56
160/125	11.069.1612.11	160/125 SDR11 ISO S-5	160	125	14,6	309	11,4	1.66
160/140	11.069.1614.11	160/140 SDR11 ISO S-5	160	140	14,6	308	12,7	1.76
180/90	11.069.1890.11	180/90 SDR11 ISO S-5	180	90	16,4	348	8,2	2.12
180/125	11.069.1812.11	180/125 SDR11 ISO S-5	180	125	16,4	353	11,4	2.32
180/160	11.069.1816.11	180/160 SDR11 ISO S-5	180	160	16,4	353	14,6	2.68
200/160	11.069.2016.11	200/160 SDR11 ISO S-5	200	160	18,2	373	14,6	3.20
200/180	11.069.2018.11	200/180 SDR11 ISO S-5	200	180	18,2	373	16,4	3.41

Dimension	Code	Detail	da(OD) mm	da(OD1) mm	s mm	L mm	s1 mm	Gewicht
225/160	11.069.2216.11	225/160 SDR11 ISO S-5	225	160	20,5	405	14,6	4.20
225/180	11.069.2218.11	225/180 SDR11 ISO S-5	225	180	20,5	403	16,4	4.37
225/200	11.069.2220.11	225/200 SDR11 ISO S-5	225	200	20,5	403	18,2	4.62
250/200	11.069.2521.11	250/200 SDR11 ISO S-5	250	200	22,7	440,5	18,2	6.02
250/225	11.069.2522.11	250/225 SDR11 ISO S-5	250	225	22,7	442	20,5	6.34