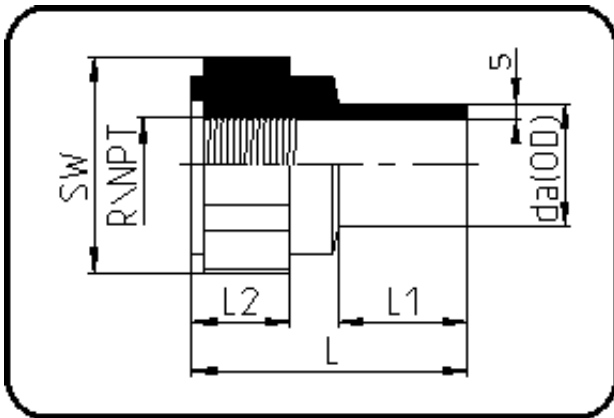


## Kurzschenkelige Fittings



Code: 032

- Adapter Innengewinde
- R-Gewinde/GFK-verstärkt
- formgespritzt
- **Stumpfschweissung**
- PPR grau

Dimension	Code	Detail	Gewicht
32	11.032.3232.11	32X1" SDR11 ISO S-5	0.02

	Einheit	Nominale	Tol+	Tol-
da(OD)	mm	32	0.30	0.00
L	mm	58	3.00	3.00
L1	mm	30	1.50	1.50
SW	mm	46	2.25	2.25
L2	mm	20	1.50	1.50
s	mm	2,9	0.50	0.00
R	inch	1	0.00	0.00
E	mm	33,25	0.00	0.00
K	mm	30,29	0.00	0.00