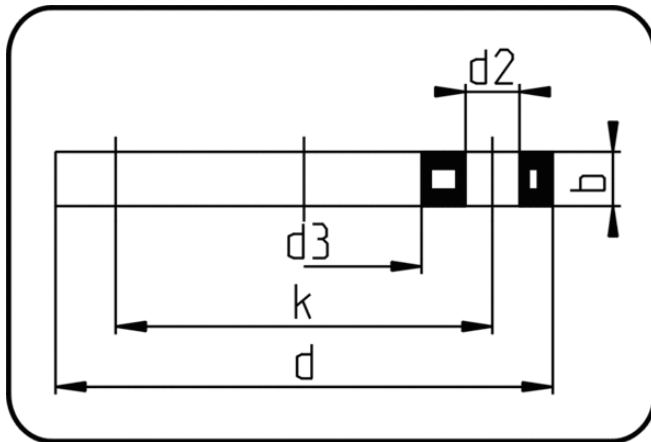


Kurzschenkelige Fittings



Code: 014

- Losflansch DIN
- Stahleinlage/für V-Bund
- schwer entflamm.& el-leitfähig
- formgespritzt+gebohrt PN10
- Flanschverbindung
- PPs-el schwarz

Dimension	Code	Detail	da(OD) mm	d mm	d2 mm	d3 mm	b mm	k mm	Gewicht
200	19.014.0200.11	200 - MOP 16 bar	200	340	22	235	25	295	3.62
225	19.014.0225.11	225 - MOP 16 bar	225	340	22	238	25	295	3.58
250	19.014.0250.11	250 - MOP 16 bar	250	409	22	288	30	350	6.48
315	19.014.0315.11	315 - MOP 16 bar	315	463	23	338	34	400	9.84