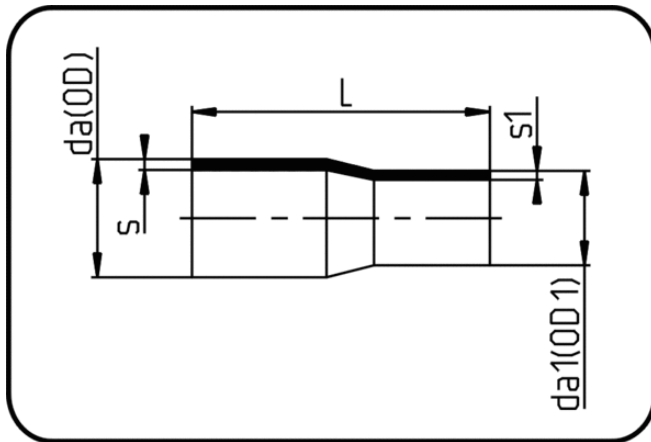


## Verlängerte Fittings



Code: 067

- Reduktion konzentrisch
- lange Schenkel
- formgespritzt
- **Stumpf + E-Muffenschweissung**
- PPR grau

Dimension	Code	Detail	da(OD) mm	da(OD1) mm	s mm	L mm	s1 mm	Gewicht
25/20	11.067.2520.11	25/20 SDR11 ISO S-5	25	20	2,3	87	1,9	0.01
32/20	11.067.3220.11	32/20 SDR11 ISO S-5	32	20	2,9	92	1,9	0.02
32/25	11.067.3225.11	32/25 SDR11 ISO S-5	32	25	2,9	92	2,3	0.02
40/20	11.067.4020.11	40/20 SDR11 ISO S-5	40	20	3,7	102	1,9	0.03
40/25	11.067.4025.11	40/25 SDR11 ISO S-5	40	25	3,7	102	2,3	0.03
40/32	11.067.4032.11	40/32 SDR11 ISO S-5	40	32	3,7	104	2,9	0.04
50/25	11.067.5025.11	50/25 SDR11 ISO S-5	50	25	4,6	118	2,3	0.05
50/32	11.067.5032.11	50/32 SDR11 ISO S-5	50	32	4,6	118	2,9	0.06
50/40	11.067.5040.11	50/40 SDR11 ISO S-5	50	40	4,6	126	3,7	0.07
63/25	11.067.6325.11	63/25 SDR11 ISO S-5	63	25	5,8	138	2,3	0.09
63/32	11.067.6332.11	63/32 SDR11 ISO S-5	63	32	5,8	136	2,9	0.09
63/40	11.067.6340.11	63/40 SDR11 ISO S-5	63	40	5,8	128	3,7	0.10
63/50	11.067.6350.11	63/50 SDR11 ISO S-5	63	50	5,8	150	4,6	0.13
75/50	11.067.7550.11	75/50 SDR11 ISO S-5	75	50	6,8	148	4,6	0.16
75/63	11.067.7563.11	75/63 SDR11 ISO S-5	75	63	6,8	149	5,8	0.18
90/63	11.067.9063.11	90/63 SDR11 ISO S-5	90	63	8,2	157	5,8	0.15
90/75	11.067.9075.11	90/75 SDR11 ISO S-5	90	75	8,2	163	6,8	0.28
110/63	11.067.1163.11	110/63 SDR11 ISO S-5	110	63	10	180	5,8	0.41
110/90	11.067.1190.11	110/90 SDR11 ISO S-5	110	90	10	180	8,2	0.49
125/63	11.067.1263.11	125/63 SDR11 ISO S-5	125	63	11,4	187	5,8	0.53
125/90	11.067.1290.11	125/90 SDR11 ISO S-5	125	90	11,4	190	8,2	0.61
125/110	11.067.1211.11	125/110 SDR11 ISO S-5	125	110	11,4	200	10	0.70
140/125	11.067.1412.11	140/125 SDR11 ISO S-5	140	125	12,7	215	11,4	0.91
160/90	11.067.1690.11	160/90 SDR11 ISO S-5	160	90	14,6	220	8,2	0.99
160/110	11.067.1611.11	160/110 SDR11 ISO S-5	160	110	14,6	220	10	1.07
160/125	11.067.1612.11	160/125 SDR11 ISO S-5	160	125	14,6	228	11,4	1.16
160/140	11.067.1614.11	160/140 SDR11 ISO S-5	160	140	14,6	229	12,7	1.30
180/125	11.067.1812.11	180/125 SDR11 ISO S-5	180	125	16,4	247	11,4	1.55

Dimension	Code	Detail	da(OD) mm	da(OD1) mm	s mm	L mm	s1 mm	Gewicht
180/160	11.067.1816.11	180/160 SDR11 ISO S-5	180	160	16,4	245	14,6	1.73
200/160	11.067.2016.11	200/160 SDR11 ISO S-5	200	160	18,2	252	14,6	2.14
225/160	11.067.2216.11	225/160 SDR11 ISO S-5	225	160	20,5	270	14,6	2.77
250/160	11.067.2516.11	250/160 SDR11 ISO S-5	250	160	22,7	317	14,6	3.75
250/200	11.067.2521.11	250/200 SDR11 ISO S-5	250	200	22,7	314	18,2	4.20
250/225	11.067.2522.11	250/225 SDR11 ISO S-5	250	225	22,7	315	20,5	4.54
280/250	11.067.2825.11	280/250 SDR11 ISO S-5	280	250	25,4	355	22,7	6.22
315/200	11.067.3120.11	315/200 SDR11 ISO S-5	315	200	28,6	380	18,2	7.12
315/250	11.067.3125.11	315/250 SDR11 ISO S-5	315	250	28,6	375	22,7	7.76