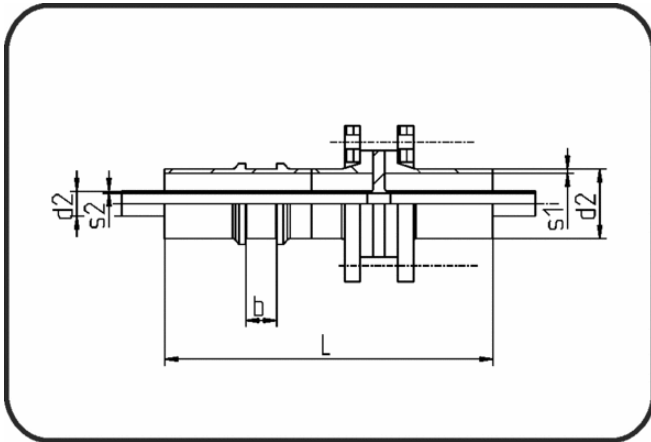


PE/PVDF Kaskadenschweissung



Code: 239

- Festpunkt Typ III, Schulter
- ohne Cut Out
- mechanisch gefertigt
- Kaskaden + E-Muffenschweissung
- PEHD/PVDF

| Dimension | Code | Detail | L mm | s1 mm | s2 mm | d1 mm | d2 mm | b mm | Gewicht |
|-----------|----------------|------------------|---------|----------|----------|----------|----------|---------|---------|
| 90/32 | 84.239.9032.72 | 90/32 SDR17/21 | 430 | 5,4 | 2,4 | 90 | 32 | 40 | 3.56 |
| 125/63 | 84.239.1263.72 | 125/63 SDR17/21 | 501 | 7,4 | 3 | 125 | 63 | 60 | 4.79 |
| 160/90 | 84.239.1690.73 | 160/90 SDR17/33 | 560 | 9,5 | 2,8 | 160 | 90 | 60 | 8.99 |
| 200/110 | 84.239.2011.73 | 200/110 SDR17/33 | 640 | 11,9 | 3,4 | 200 | 110 | 60 | 14.60 |
| 280/160 | 84.239.2816.73 | 280/160 SDR17/33 | 666 | 16,6 | 4,9 | 280 | 160 | 65 | 24.07 |